



---

## **GeoSpatial Information Technology (IT) – Decision Making Support**

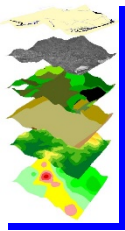
### **OVERVIEW OF JAYA Corporation**

JAYA provides government agencies with the following Information Technology (IT) / Geospatial services:

- **Geospatial Modeling**
- **Remote Sensing (data and sensor)**
- **MMRP Support**
- **Digital Document Management**

Since our inception, JAYA has maintained growth by building win-win relationships with our customers based on our ability to adapt to the dynamic needs of customers, utilization of available technologies, and applying the required resources with the knowledge, skills, and abilities to successfully execute tasks and challenges. JAYA is headquartered in Huntsville, AL.

### **GeoSpatial Capabilities** (*Supports: facility/site management, environmental, terrain and map data production, map update, site analyses*)



**GeoSpatial Database Development** – JAYA utilizes standard off-the-shelf technologies augmented with innovative methods to develop the geospatial data and application necessary for our customers to accomplish their goals.

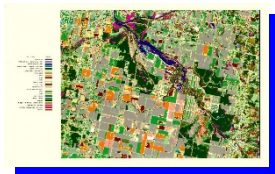


**Data Development by Combining Existing Data with Current Information and GPS Technology** – JAYA addresses data development by performing the research of available existing data augmented by GPS and/or current digital data from aerial or satellite platform which minimizes design of base data. JAYA has developed a field data recorder based on an integrated platform of a tablet-PC, Trimble GPS, and ESRI ArcView.

### **Remote Sensing Capabilities** (*Supports: land use analyses, map feature update, terrain modeling and analyses*)

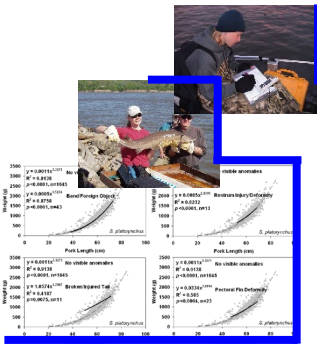


Today remote sensing is synonymous with data obtained from satellites or other aerial platforms. Data when properly enhanced and orthorectified provide valuable insight to the land around us. JAYA personnel skilled with the Leica ERDAS Imagine image processing suite have developed custom procedures to automate processes associated with data imagery preparation. Digitized data sets are orthorectified, referenced to a base data set, and integrated into a geodatabase for temporal analysis or thermal data is process to identify thermally sensitive features such as groundwater springs. Field data collected using GPS technologies can be entered into a geodatabase and overlaid on the aerial imagery. Now the analysts or manager has a map with a new dimension – data relative to the study area.



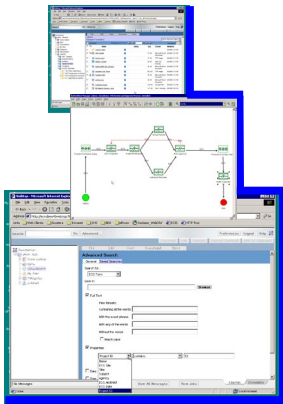


## **Environmental Services (*Supports: environmental characterization, impact assessment and modeling, field data collection, and environmental data modeling*)**



JAYA's cadre of environmental and natural resource scientists is involved in collecting, processing and analyzing data to support environmental stewardship. Support includes numerical modeling, environmental impact and risk assessments, and environmental management trade-off analyses. An example of an environmental impact analysis is the work performed to monitor the health of the sturgeon population among the Mississippi tributaries. Field collected data analyzed using GIS and statistically software packages revealed the traumatic effects of environmental changes on the sturgeon population.

## **Digital Document Management Capabilities (*Supports: enterprise, departmental, group*)**



Today we deal with digitally prepared and stored electronic media on a daily basis - unstructured processes that make documents hard to find and retrieve. Items stored on one machine often cannot be accessed from another machine. JAYA personnel can add structure that improves productivity to a potential chaotic situation. The solution is a series of document management software which allows the user to create, revise, and comment the documents. Customized workflows determine who sees the document and who has actions. All actions are recorded providing a clear audit trail. Documents are easily retrieved by multiple users from a structured repository. Documents are not lost or accidentally deleted. JAYA can tailor a Content Management system to your exact requirements.

## **Current and Past Customers**

- USACE Engineer Research and Development Center
- USDA Forest Service Region 8 and Ozark-St. Francis National Forest
- USDOJ National Park Service
- USDOJ Fish and Wildlife Service
- US Missile and Space Intelligence Command
- USACE Huntsville Center
- NASA Marshall Space Flight Center
- USAF Arnold Engineering Development Center
- US Army Space and Missile Defense Command

---

**JAYA Corporation**  
**4801 University Square, Suite 33**  
**Huntsville, AL 35816**  
**Phone (256)722-0700**  
**<http://www.jayacorp.com>**